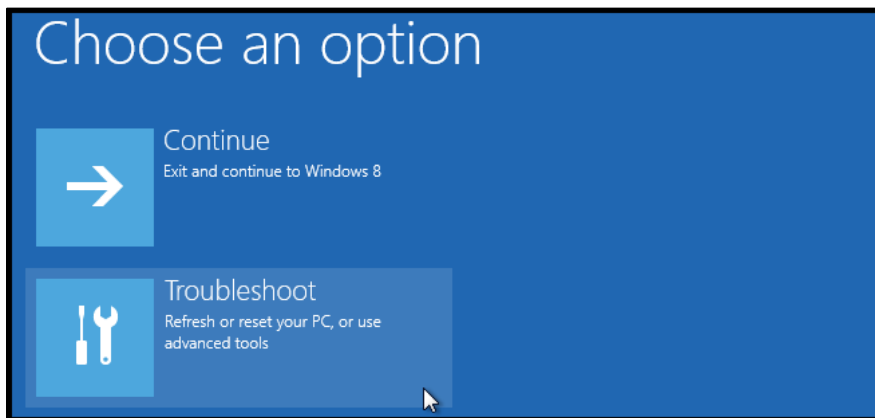


## Enabling “unsigned” drivers in Windows 10 OS

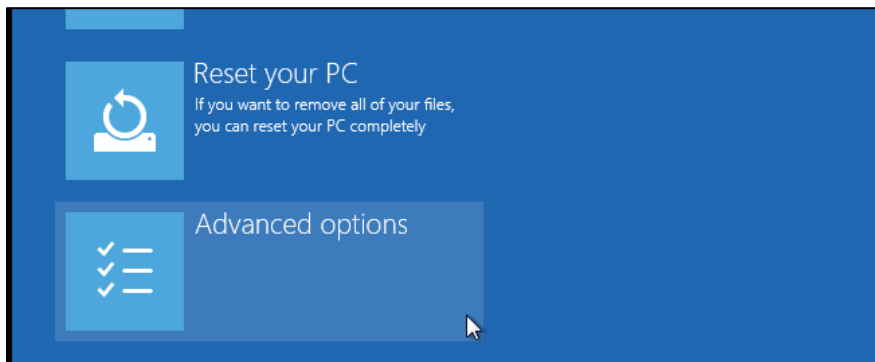
1. Hold down the **SHIFT** key while you click **Restart**.



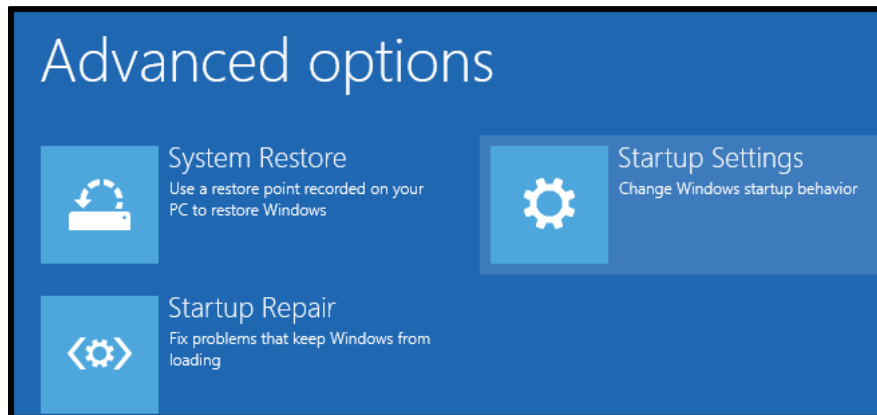
2. Once your computer has rebooted, choose the **Troubleshoot** option.



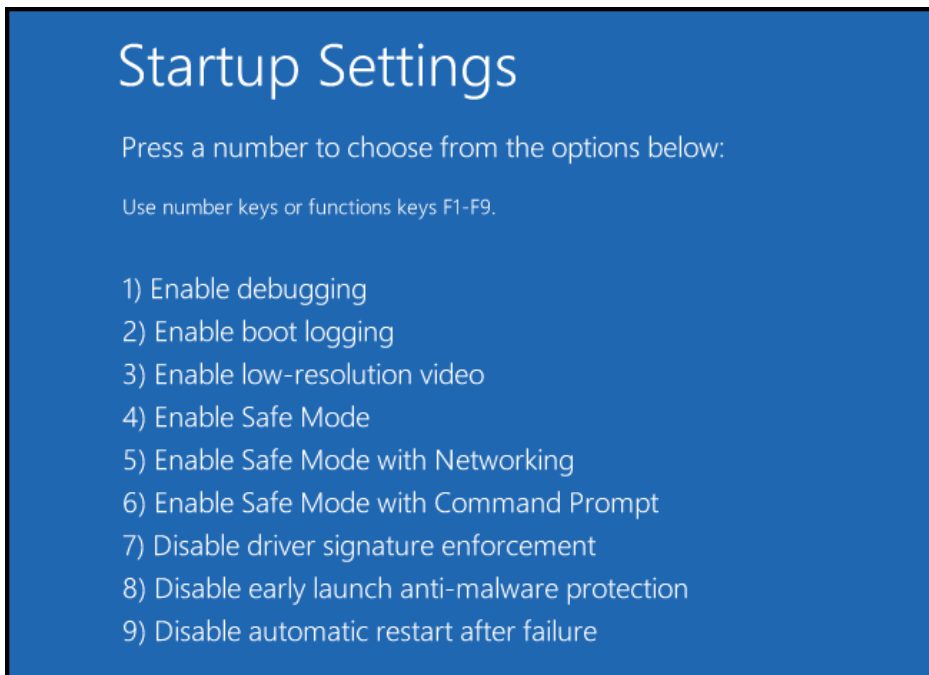
3. Next, choose **Advanced options**.



#### 4. Choose **Startup settings**.

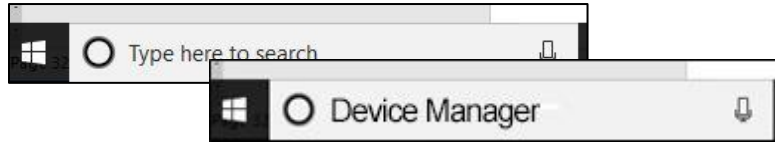


#### 5. From the list, **Press the F7** key to choose “**Disable driver signature enforcement.**”

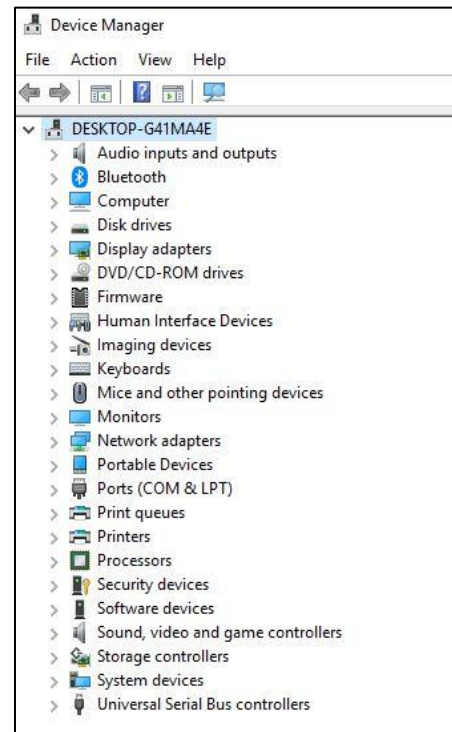
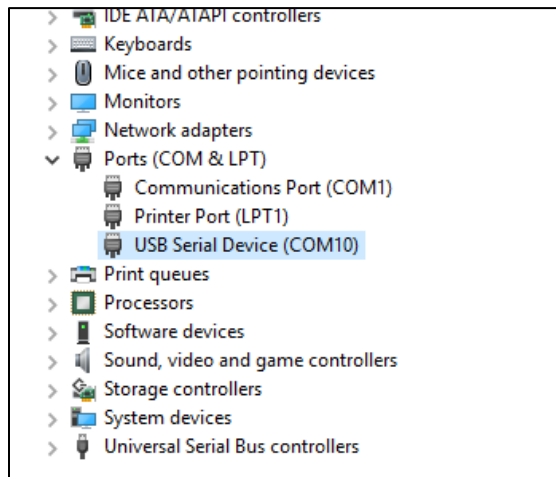


6. Once your computer starts back up, you must **manually install the driver**. Plug your DJI device (in this case, the **NAZA-M V2 Flight Controller**) into the computer. To do this, you will need to use the supplied **Micro-USB cable** from the NAZA-M V2 box, and plug the small connector into the **LED Module** on your drone. The other end goes into a **USB port** in your computer. Connect your battery to the drone.

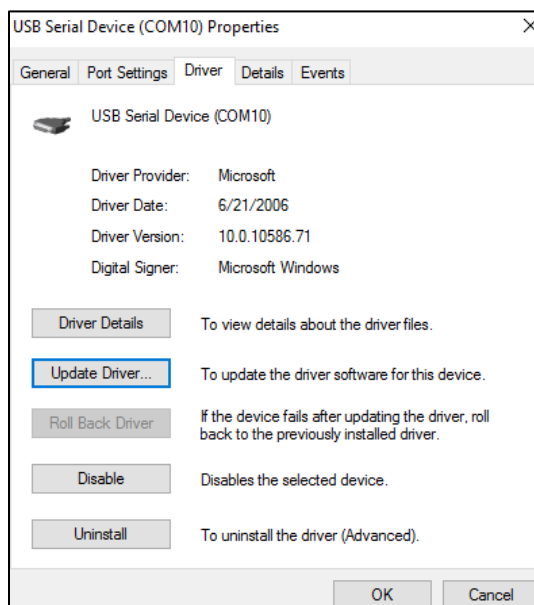
7. Next, **open Device Manager** on your computer. The easiest way to do this is to type **Device Manager** in your search window. It will show up at the top of the window:



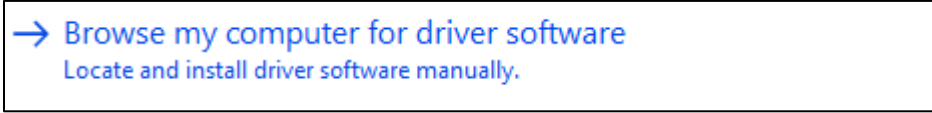
8. You should see your device listed under ports as **“USB Serial Device (COM##)”**.



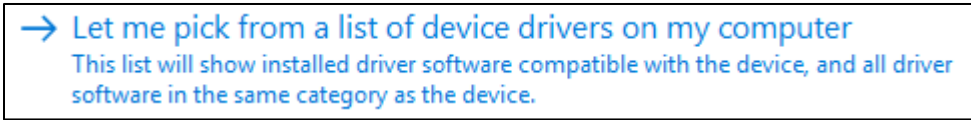
9. Next, **right-click** that device, click **“Properties”** and under the **“Drivers”** tab, Click **Update Driver**.



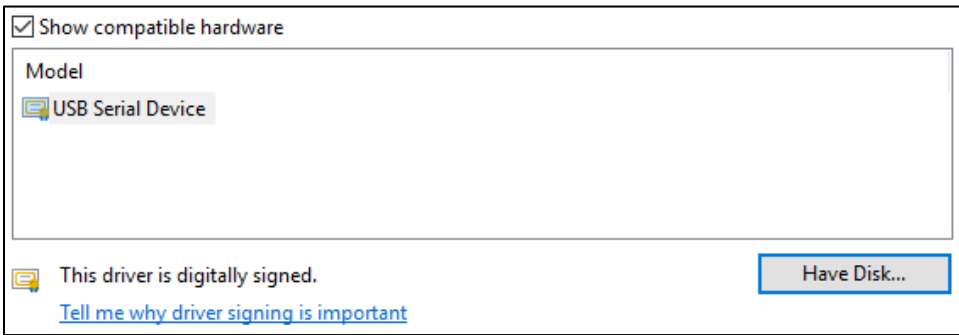
10. Then click ...



11. Then click ...

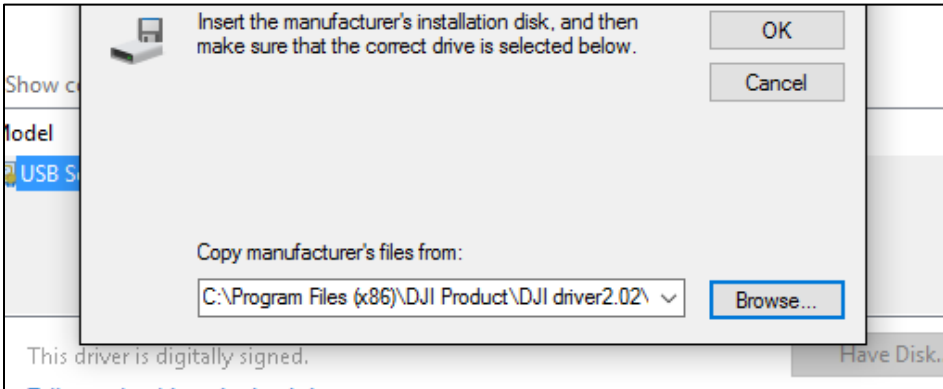


12. Then click the “Have Disk...” Button.

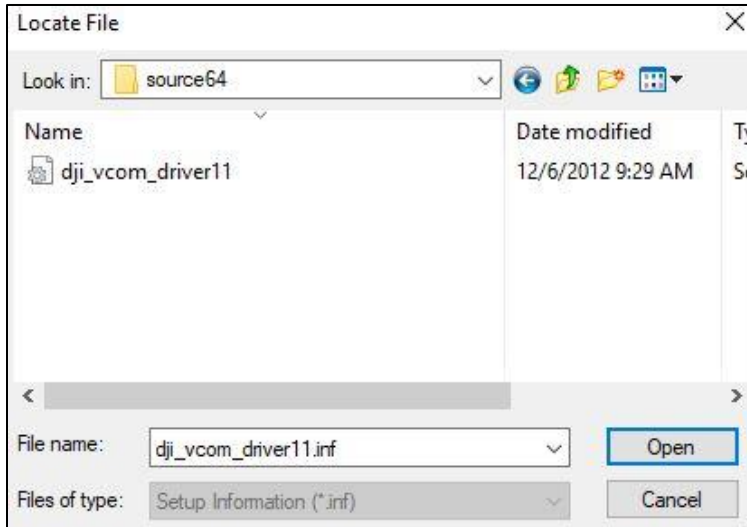


13. Then **Browse** to this directory:

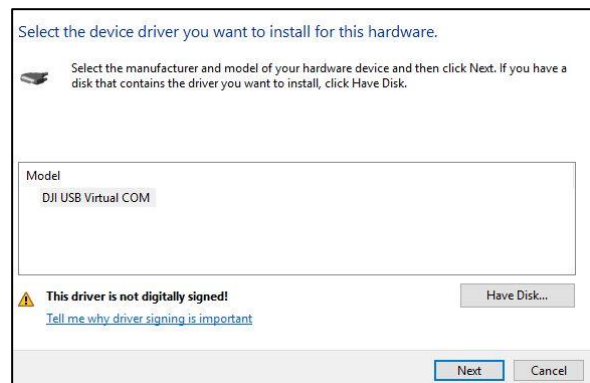
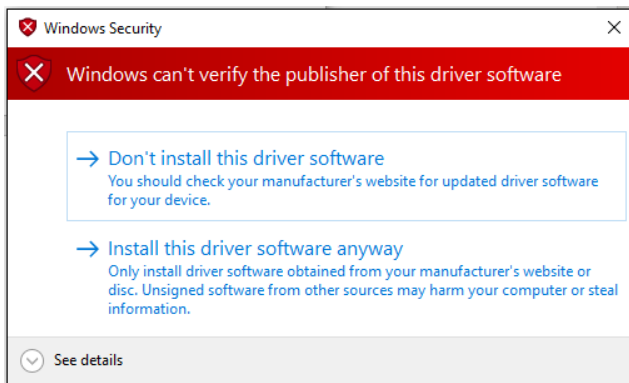
C:\Program Files (x86)\DJI Product\DJI driver2.02\source64



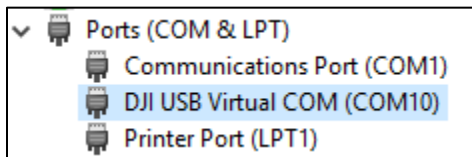
14. Select the DJI driver “**dji\_vcom\_driver11.inf**” and hit **OPEN** then **OK**.



15. You may see a warning ... close it. Hit **NEXT** and allow Windows to install the driver software anyway.



16. Your device should now look like this in Device Manager, and the DJI software should be able to connect.



17. Now go back and double-click the **NAZA-M V2 Assistant icon** on your desktop. Select “**SKIP ->**” and the software should open.

